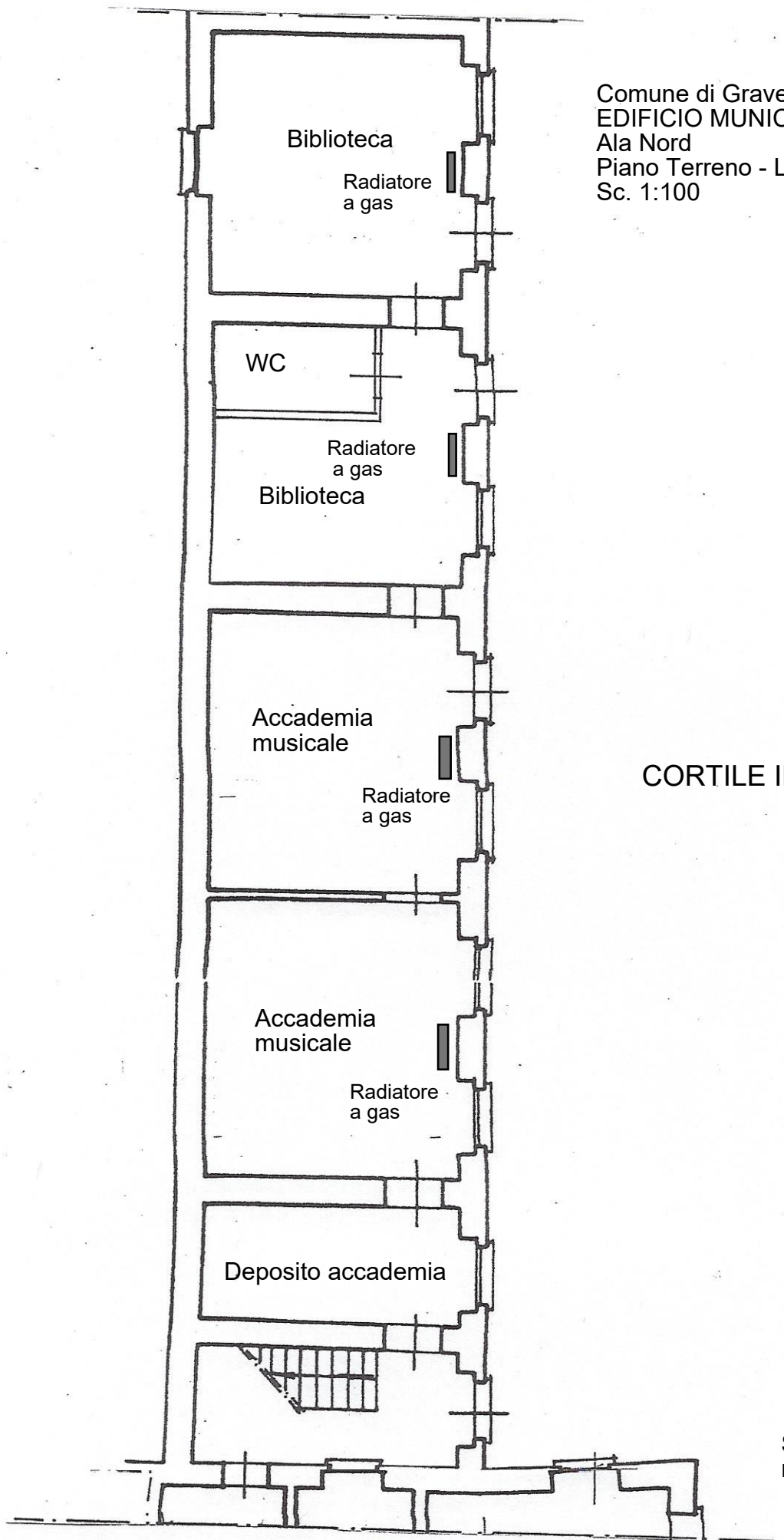


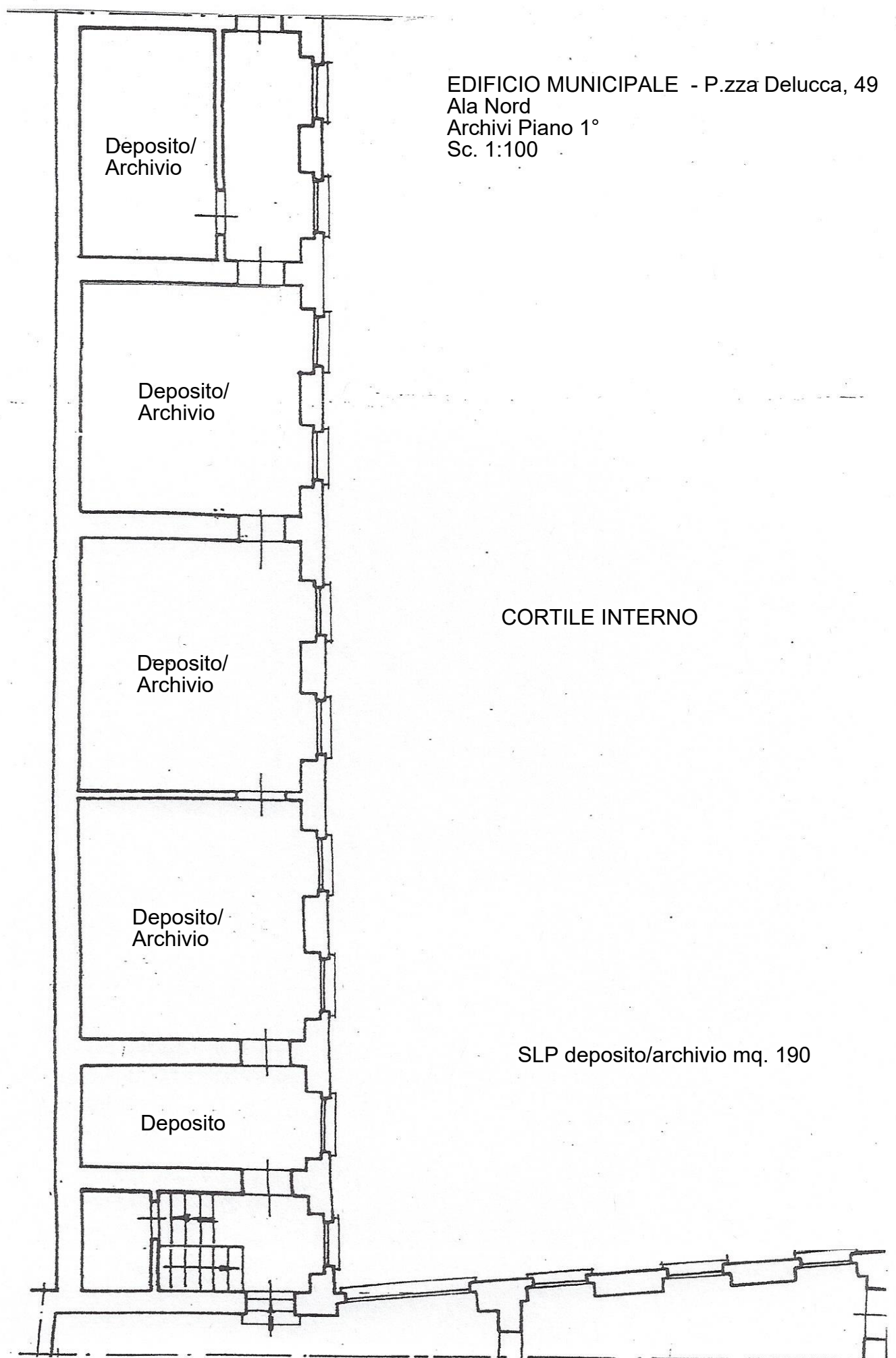
Comune di Gravellona Lomellina  
EDIFICIO MUNICIPALE P.zza Delucca 49  
Ala Nord  
Piano Terreno - Locali polifunzionali  
Sc. 1:100



CORTILE INTERNO

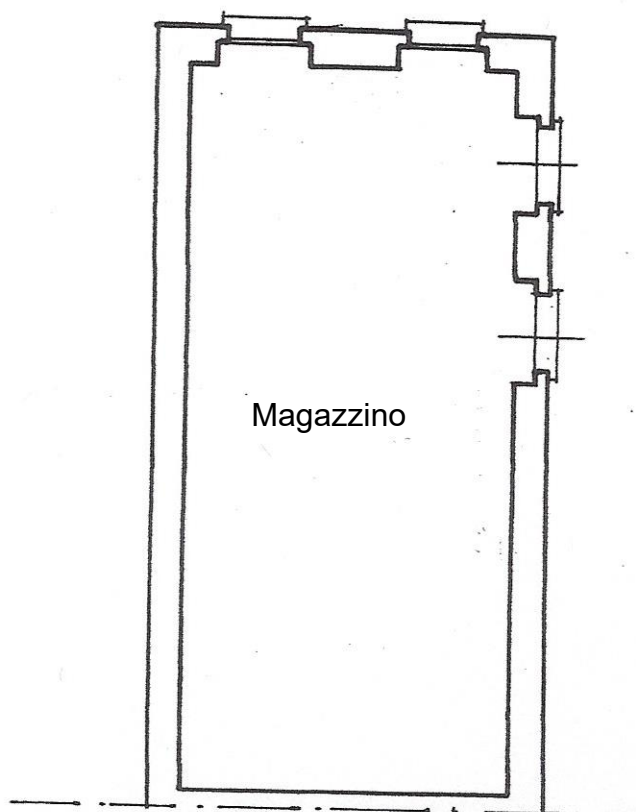
SLP locali polifunzionali  
mq. 140

EDIFICIO MUNICIPALE - P.zza Delucca, 49  
Ala Nord  
Archivi Piano 1°  
Sc. 1:100



SLP deposito/archivio mq. 190

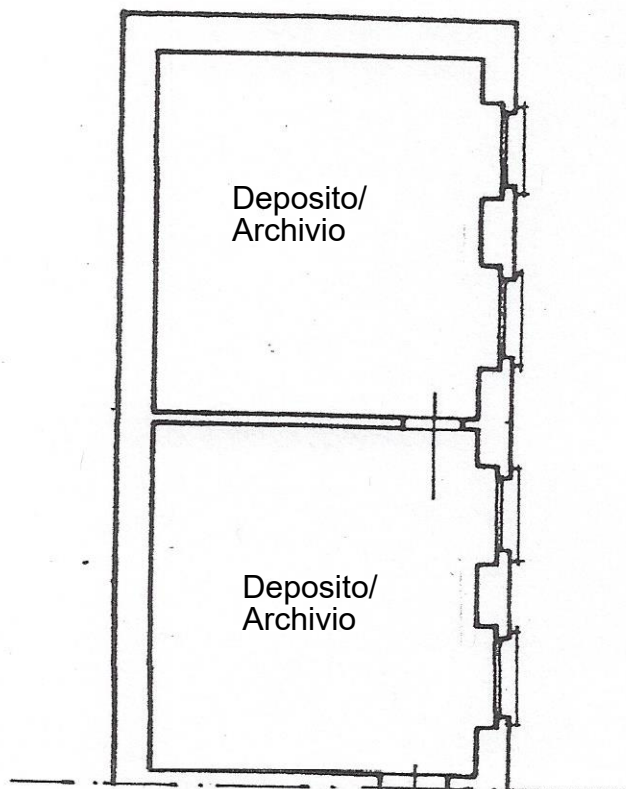
EDIFICIO MUNICIPALE  
Ala Nord  
Magazzino Piano Terreno  
Sc. 1:100



CORTILE INTERNO

SLP magazzini mq. 50

EDIFICIO MUNICIPALE  
Ala Nord  
Archivi Piano 1°  
Sc. 1:100



CORTILE INTERNO